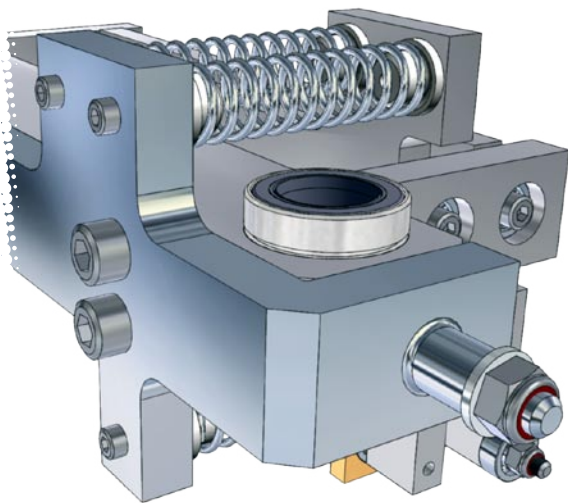


The IDEAL-PARTS libraries contain more than 11,000 standard fasteners, bearings, steel profiles and holes for SolidWorks. They feature native, multi configuration parts with integrated Smart-Mates™ allowing automatic DRAG, DROP and MATE.

Standard Microsoft® Windows installation and seamless integration through the SolidWorks Design Library™ means designers and engineers are more productive immediately. The parts are modelled for efficiency and realism, displaying correctly in technical drawings, BOMs, callouts and photo-realistic renderings. PhotoWorks™ materials are assigned for the creation of impressive visuals for client and in-house presentations. Mass properties, hatch patterns and RealView™ are also programmed.

IDEAL-PARTS libraries have the following advantages:

- biggest range of standard Australian metric parts
- all threads defined
- Microsoft® Windows installation
- accessed with native SolidWorks commands
- correct representation of parts in 3D and in 2D
- BOM, Callout and Weldment Cut-List names
- engineering reference data included
- engineering material-properties assigned
- PhotoWorks™ materials assigned
- SmartMates for drag'n drop
- full manual and on-line FAQ
- tested and updated with each new release of SolidWorks
- low cost updates
- consistent naming conventions
- modelled accurately, robustly and for minimum file size.



BALL'N ROLLER BEARINGS are listed by number and size in the parts list (BOM) and display correctly when sectioned in drawings. Engineering data like abutment dimensions, limiting speeds and forces are included in each of the more than 7000 part configurations eliminating the need to consult external references, improving efficiency. Keys, seals and rod-ends are included for added convenience.

NUTS'N BOLTS features 38 metric bolts, screws, nuts, washers, pins and clips in more than 2000 commercially available sizes. Threads are represented as SolidWorks Cosmetic-Thread features providing accurate representation in 2D documentation. An additional 400 sheetmetal captive fasteners are included with proper call-outs. Blind (pop) rivets are the latest addition.

SHEETMETAL FASTENERS are included **free** in NUTS'N BOLTS. They are drag'n drop Library Features with full thread and part call-outs. Retained fasteners including PS, PF, PFH, PTSO, PBSO, TR, ARB, ARBSO, MINIARB, MINI-OFF and many more.

CHANNELS'N BEAMS features the full range of OneSteel® and Tubemakers® range of hot-rolled and cold-formed profiles as part-files and Weldment features. Three types of structural fasteners are also supplied.

TAP'N CLEAR is a collection of more than 170 metric holes from M1.6 to M36. It features tapped holes and clearance holes including countersunk and counterbored, in close, medium and free tolerances. This library is available **free** for download at our web-site.

For complete details, product trials and more, please visit our website or contact us at:

info@ideal-parts.com



nuts'n bolts	
Bolts & Screws	Socket Head Cap Screw Countersunk Head Cap Screw Button Head Socket Screw Socket Head Shoulder Screw Socket Low Head Cap Screw Grub Screw Plain Cup Grub Screw Knurled Cup Hex Bolt Hex Bolt Flange-Head Hex Head Set Screw Machine Screw Phillips Pan Head Machine Screw Phillips CSK Head Selftap Phillips Pan AB* Selftap Phillips CSK AB*
Nuts	Anchor-Sert Hex-Nut Plain Lock-Nut Nyloc Nut Nyloc Nut Thin Slotted Nut Castle Nut Dome Nut Wing Nut Flange Nut Pressed Nut Square Pressed Nut Hexagonal Connecting Nut
Washers	Plain Washer Spring-Lock Washer Internal Lock Washer External Lock Washer Struc.Washer – Hardened Tempered Struc.Washer – Square Tapere d 8° Struc Washer – Coronet® Load Indicator
Pins	Spring Pin Dowel Pin Clevis Pin* Cotter Pin*
Clips	E-Clip** Internal Circlip** External Circlip** Push-On Fixing

sheetmetal		
Self Clinching	Nutsert Flush-Nutsert Studsert Blind Standoff Through-Hole Standoff Thread-Locking Nutsert	PS PF PFH PBSO PTSO MINILOK
Blind Fitting	Tri-Lobe Blind-Nut Anchor-Sert	TR AS
Anchor Rivet Bushes	ARB Series ARB Self-Locking ARB Tank-Type ARB Miniature ARB Standoff ARB Miniature Standoff	ARB ASL ARB-TANK MINIARB ARBSO MINIOFF

Blind Rivets	Plain Head Large Flange Head Countersink Head	BR BR-LF BR-CSK-120
---------------------	---	---------------------------

channels'n beams	
Cold Formed	CA Angle CC Channel CF Flat CHS Circular RAIL Hand Rail RHS Rectangular SHS Square SILO
Hot Rolled	EA Equal Angle PFC Parallel Flange Channel TFB Tapered Flange Beam UA Unequal Angle UB Universal Beam UBP Universal Bearing Pile UC Universal Column Light Billet Rod
Rail	Rail
Welded	WB Welded Beam WC Welded Column
Structural Washers	Structural Washer Hardened Tempered Structural Washer Square Tapered 8deg Structural Washer Coronet® Load Indicator

NEW IN 2006:
ALL PROFILES
INCLUDED AS
WELDMENT
FEATURES!

tap'n clear	
Clearance Holes	SHCS-Counterbore – close fit SHCS-Counterbore – medium fit SHCS-Counterbore – free fit Countersink – close fit Countersink – medium fit Countersink – free fit Clearance Hole – close fit Clearance Hole – medium fit Clearance Hole – loose fit
Tapped Holes	Blind Hole – Tapped Through Hole – Partially tapped Through Hole – Through tapped

ball'n roller bearings		
Ball Bearings	Angular-Contact-Ball-Bearings	open-40° high-speed-open-15°
	Double-Row-Ball-Bearings	steel-cage open steel-cage shielded polyamide-cage polyamide-cage shielded polyamide-cage sealed
	Double-Row-Self-Aligning-Ball-Bearings	open
	Miniature-Ball-Bearings	open shielded sealed flanged-open flanged-shielded flanged-sealed
	Single-Row-Ball-Bearings	open shielded sealed snap-groove snap-ring
	Thrust-Ball-Bearings	extra-small/miniature (TAM) extra-small/miniature (TG) single directi on flat-back single direction spherical-back single direction aligning-seat double direction flat-back double direction spherical-back double direction aligning-washer
Roller Bearings	Crossed-Roller-Bearings	full-complement-open caged & full-complement-open caged & full-complement-sealed high rigidity-open high rigidity-sealed slim-type full-complement-open
	Cylindrical-Roller-Bearings	single-row retain on inner single-row retain on outer single-row retain 2 outer & 1 inner single-row retain 1 outer and 2 inner single-row 2 outer, 1 inner & inner flange single-row 1 outer, 2 inner & outer flange single-row 2 outer, 1 inner & thrust collar double-row retain on inner double-row retain on inner-taper-bore double-row retain on outer double-row retain on outer-taper-bore
	Spherical-Roller-Bearings	plain oil-groove/holes plain oil-groove/holes
	Spherical-Roller-Thrust-Bearings	plain
	Tapered-Roller-Bearings	plain-cup flanged-cup
Linear Bearings	Linear-Ball-Bearings	compact-open compact-seal light-open light-seal light-segment-open light-segment-seal heavy-open heavy-open-lube heavy-seal heavy-seal-lube heavy-split-open heavy-split-open-lube heavy-split-seal heavy-split-seal-lube heavy-segment-open heavy-segment-open heavy-segment-seal heavy-segment-seal-lube
Miscellaneous	Keys	Key-Parallel round-round Key-Parallel flat-flat Key-Parallel flat-round Key-Taper round-round Key-Taper flat-flat Key-Gib-Head Key-Woodruff
	Rod-End-Bearings	male female
	Sealing-Rings	Single-Lip Double-Lip
	Spherical-Bushings	Pilloball Spherical Bushing

© 2007 Ideal Industrial. This table correct at date of publication. We reserve the right to change specification or content without notice. Please check www.ideal-parts.com for updates.